

THE DRIVING FORCE

The Newsletter From Your Anchoring Professionals

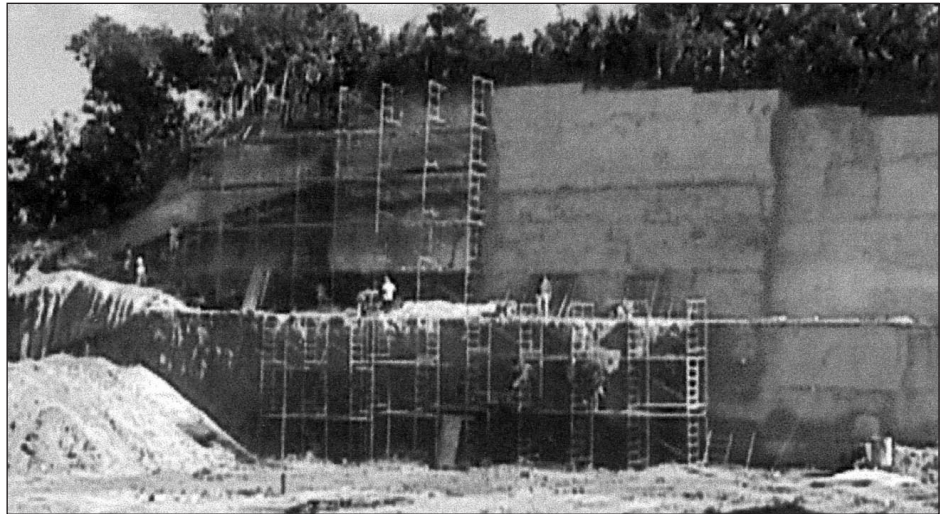
© 2001

1st Quarter 2001

MANTA RAY WALLS WITHSTAND THE QUAKES

We were sorry to hear of the great devastation and human loss in El Salvador, and our prayers went out to the country. CPK Consultores S.A. has erected over 15 thousand square meters of "MANTA RAY WALLS" using the MANTA RAY anchors with a Shot Crete System or with Concrete Block Walls. In recent earthquakes in El Salvador, which registered 7.6 and 6.6 on the Richter scale, none of the MANTA RAY walls moved at all.

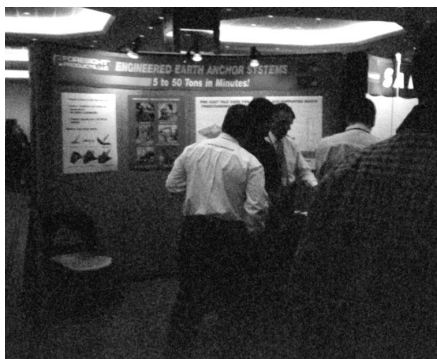
Typical slope stabilization project.



National Association of Tower Erectors (NATE) Show February 2001 - Dallas, Texas

We had an extremely popular booth at the NATE Show in Dallas. One of the keynote speakers mentioned in his address "we can no longer dig holes and pour concrete." We have the answer in the STINGRAY anchoring system in conjunction with the Pre-Cast Pile Caps.

The STINGRAY anchors have an ultimate holding capacity of 445kN (100,000 lbs.), for lateral forces, while the Pre-Cast Pile Caps handle the compression loading. Installation of a STINGRAY anchors is approximately 30 minutes. As you can see we offer the perfect solution for rapid deployment of freestanding towers.



The booth was manned by John N. Yapundich,

Foresight Products LLC, Bjorn Borgqvist, of UBBAB, our distributor for the Scandinavian Countries, and Gareth Wells Williams, of Broron Technologies, South Africa, the manufacture of the Lattainer Tower System.

Training Program May 17, 18 and 19, 2001 Denver, Colorado

By Popular demand, we are going to hold the training program again this year. The Training Program will cover MANTA RAY and STINGRAY for both Utility and Civil construction work. Any interested parties please contact your respective sales person.

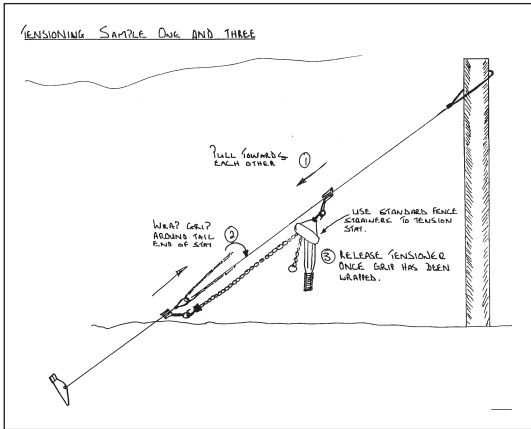
Mike Jennings Domestic Civil Construction/Director of Sales

Mike joins us as Civil Construction/Director of Sales. Most recently with Furukawa Rock Drill, Mike has eighteen years marketing and sales experience with construction and mining equipment and accessories. Originally from New Jersey, Mike and his family have resided in Colorado for eleven years. We welcome Mike to this new position with Foresight.



New Product - Vinline Grip

We would like to offer a new product that can be used for the Vineyard and Fencing market. It is called the Vinline Grip. A standard fence come-a-long is used to pull the cables together and then the Vinline Grip wraps around the cable. It is available in sizes, 3mm to 10mm. It can be easily re-tensioned many times as required. We believe that this product is an excellent compliment to our anchors.



New Product: MR68 With Shackle

Due to numerous requests, we have produced an MR68 with a shackle. The shackle will be tapped for some standard rod thread patterns of 10mm, and 3/8" 16 thread per inch. We have had many interesting applications using this type of anchor for securing park benches and tables, concrete pouring forms, vineyards, sheds, and others. I am sure you will find many other ways to utilize this assembly. We also have available a hydraulic drill which can be used to lock the MR68 anchor/rod system.



Left - MR68 new galvanized ductile iron Anchor

Right - 68-DB aluminum DUCKBILL Anchor

FORESIGHT[®]
PRODUCTS, LLC

6430 East 49th Drive
Commerce City, Colorado, U.S.A. 80022
(303) 286-8955 or 1-800-325-5360 • Fax (303) 287-3866

STING
RAY[™]

MANTA
RAY[®]

DUCKBILL[®]

Quality

It shall be the policy of Foresight Products, LLC. to provide defect-free product and service on time, every time, to all customers that require earth anchoring systems.